



BY CHRISTIANE JATAHY

TECHNICAL REQUIREMENTS

This technical file is the basic technical requirements for a standard venue. They are indicative and will be completed according to particular venues, by means of specifications and adaptations agreed upon directly between the venue and the company.

Altogether, these specifications will constitute the technical requirements sheet which is entirely integrated into the contract.

The company cannot be held responsible for the announcement of performances by the theatre before a definite technical agreement has been reached.

Running time : 70 minutes

Stage

- Minimum stage size :
 - depth 10 meters
 - proscenium opening 14 meters
 - high 4 meters (h grid)
- The stage must be rid of all elements not used in the performance (screens, sets, piano, etc...)
- The fly system must be entirely empty (the pipes must be visible, there will be no borders)
- We need wireless internet connection on stage

OBS: We ask to be sent to us the plans for the theater, so we can draw our set on the space suggested for the performance. This is essential because since we have a box truss structure on stage, this can make a difference on the final number of spectators. Sometimes there are seats with no view.

BOX TRUSS (Q30) STANDARD (for each venue a plan adapted must be approved before rent the truss)

example :

- 4 pieces with 4 meters (towers)
- 10 pieces with 3 meters
- 4 pieces with 2 meters
- 8 pieces with 0,50 meters
- 8 cubes 30cm x 30cm
- 6 level bases
- 4 sleeve blocks
- 4 cargo loads (it's a rectangular piece attached to the top of the tower that serves as support for the hoists).



- usually the box truss is hanging with 6 x 500KG HOISTS from the grid (3 upstage and 3 downstage) and we don't use the 4 cargo loads

OBS: This is a basic Q30 rider that might need bigger quantities of pieces according to the size of the theater

In addition to the box truss, we use Q30 elements of this list to build 2 totems. One with 2m high to hang a set element, and one with 2,50m high to hang a big Mirror. for this installation we need some clamp and small tubes.

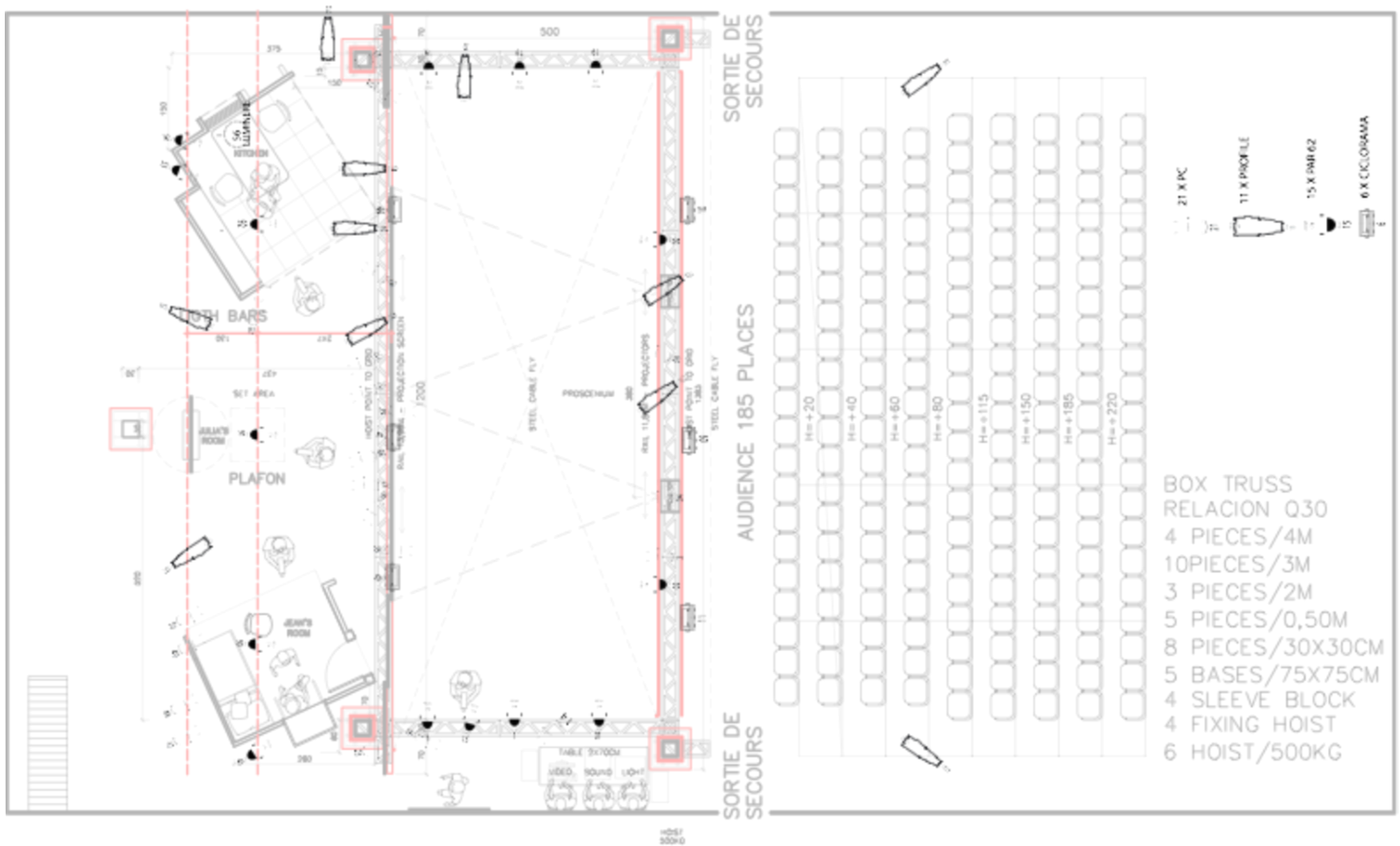
Light

Provide by the venue

- 15 PAR 64 1000w, with 14 lamp CP62 (MFL) and 1 lamp CP60 (VNSP)
- 14 Profile 25°/ 50° ETC Zoom
- 22 PC 1000w with barndoor
- 08 mini set light 1000w
- 02 PC 650w with barndoor
- Dimmable house light
- 01 programmable light control ETC / ADB (ACII floppy disk)
- 72 dimmer channels compatible
- Wires and extensions to plug all the system

OBS:

- This is a basic light rider that might need bigger quantities of light projectors according to the size of the theater where we will perform.
- the light desk is on stage



Sound

Provide by the venue

- System of good quality compatible with the area of the theatre. Five speakers of good quality plugged in the theater system, preferably MEYER SOUND, JBL or NEXO. This speakers will be placed to make a surround sound system, with two speakers in the front, two speakers in the back of audience and the mono speaker for the video is hung upstage. Subwoofer for low frequencies. We should have independent channels for the speakers.
- 01 digital mixing console Yamaha LS9 16 (or 32), M7CL48 or similar
- 02 CDJ Pioneer 200s or similar (Pioneer, Denon, Vestax)
- 02 stereo 32 band equalizer (don't need with the LS9)
- 01 Shure UHF wireless transmission system with phantom power and 01 mic SLX Beta 58 or similar
- 01 Shure UHF wireless transmission system with phantom power and 01 mic Shure 81 or 01 mic Sennheiser ME 66
- 04 shot guns mics Sennheiser ME 66. Two os these mics should have claws, as they are going to be fixed in our set
- 03 shot guns mics Neumann KM 184 (or 185, fixed in our set)
- 06 D.I. box
- 01 cable mini jack/ 2 x jack 6,5mm (to connect our computer)
- The necessary cables to connect all the equipment

INPUT LIST " JULIA " Preferred console: YAMAHA LS-9 16 or 32				
C	INSTRUMENT	MIC/DI	INSERT	Output
1	OVERHEAD Gelson	Sennheiser ME 66		
2	OVERHEAD Gelson	Sennheiser ME 66		
3	OVERHEAD kitchen	Sennheiser ME 66		
4	OVERHEAD kitchen	Sennheiser ME 66		
5	OVERHEAD BOX L	Neumann KM 184		
6	OVERHEAD BOX C	Neumann KM 184		
7	OVERHEAD BOX R	Neumann KM 184		
8	OVERHEAD CAMERA Wireless	DPA lapel mic +UR-1 bodypack		L+R
9	wireless handheld Mic.	Shure UHF BETA 58	reverb	L+R
10	MAC LEFT	BSS DI		center

11	MAC RIGHT	BSS DI		center
12	CDJ 1 LEFT	BSS DI		Rear L
13	CDJ 1 RIGHT	BSS DI		Rear R
14	CDJ 2 LEFT	BSS DI		Left
15	CDJ 2 RIGHT	BSS DI		Right
17	FX Reverb			
18	FX Reverb			
OUTPUTS	AUX. 1 F.O.H. L	AUX. 2 F.O.H. R		
	AUX. 3 CENTER	AUX. 5 REAR L		
	AUX. 6 REAR R	AUX. 7 SUBS		

OBS:

- the sound desk is on stage

Video

Provide by the venue

Cables

- CAT 5 > 20m
- CAT 5 > 40m
- SDI > 50m
- * Power Strip > 10 Sockets
- * power cables 60m in total (20m for left VP and 40m for the right VP).

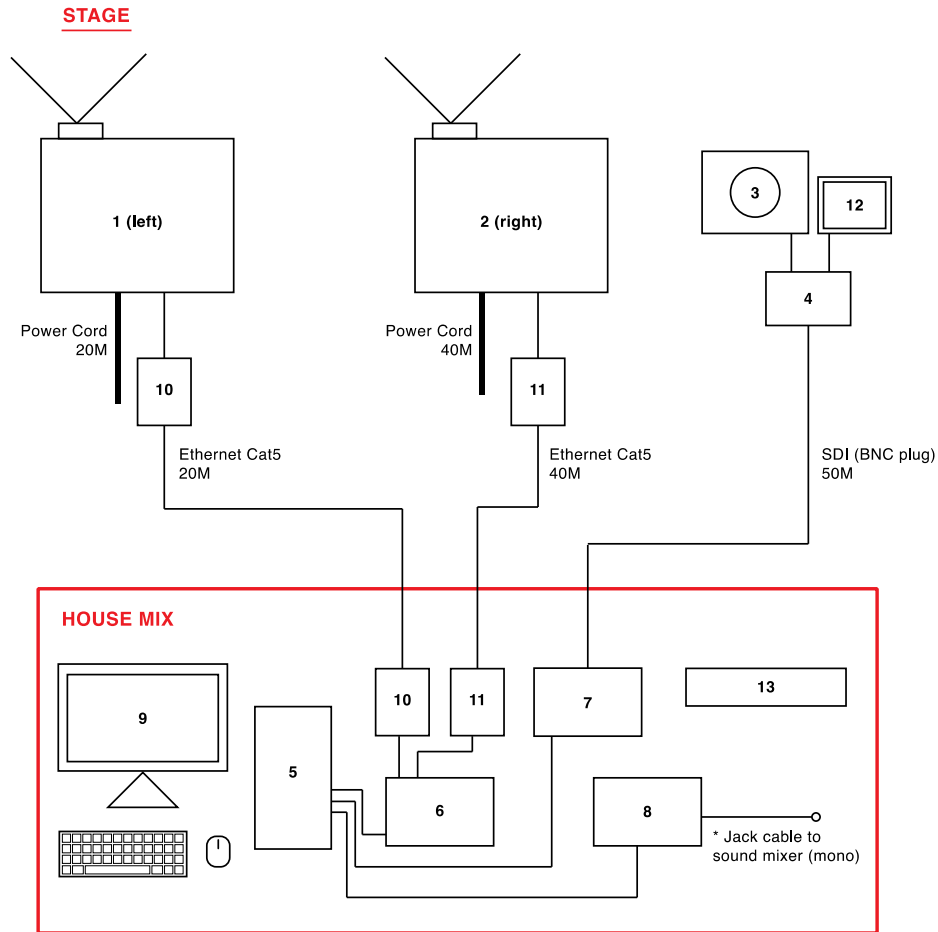
The company provide all the video equipment above :

- 1 - Video projector (Panasonic 39182edu)
- 2 - Video projector (Panasonic 39182edu)
- 3 - Camera (Canon 5D MarkII)
- 4 - Black Magic HDMI > SDI Converter (w/battery)
- 5 - Mac Pro 2017
- 6 - Matrox Triple Head 2go DP Edition
- 7 - Video Capture (Black Magic Deck Link Duo 2)
- 8 - Audio Interface (Focusrite Scarlett 6i6)
- 9 - Monitor
- 10 - Lindy HDMI Extender Cat5/6
- 11 - Lindy HDMI Extender Cat5/6
- 12 - Marshall Mini Monitor

OBS:

- In case of subtitles, the venue needs to provide 2 video projectors with the necessary cables. 1 laptop Apple with Glypheo software running. This computer is installed behind the audience.
- the video (camera mixing) desk is on stage
- According to your theater, a central screen (+ video projector) can be necessary for the subtitles: for each theater, it will be negotiated

JULIA // VIDEO // TECHNICAL RIDER



EQUIPMENTS

- 1 - Video Projector (Panasonic 39182edu)
- 2 - Video Projector (Panasonic 39182edu)
- 3 - Camera (Canon 5D MarkII)
- 4 - Black Magic HDMI > SDI Converter (w/battery)
- 5 - Mac Pro 2017
- 6 - Matrox Triple Head 2go DP Edition
- 7 - Video Capture (Black Magic Deck Link Duo 2)
- 8 - Audio Interface (Focusrite Scarlett 6i6)
- 9 - Monitor
- 10 - Lindy HDMI Extender Cat5/6
- 11 - Lindy HDMI Extender Cat5/6
- 12 - Marshall Mini Monitor
- 13 - Power Strip (10 sockets)

CABLES

- Ethernet Cat5 : 20M
- Ethernet Cat5 : 40M
- SDI (BNC plug) : 50M
- Power Cord : 20M
- Power Cord : 40M

SOFTWARE

Isadora (<http://troikatronix.com/>)

Local crew needed

a **minimum** of 04 people for truck unloading

01 technicians for video set up and subtitles

01 technician for sound set up

03 technicians for the stage set up

JULIA technical rider 16october24

6 sur 10

02 technician for light set up

01 dresser

01 sound technician during the performances

01 video technician during the performances

01 light technician during the performances

01 dresser (after the performance)

05 people for set breakdown

a minimum of 04 people for truck loading

WORK SCHEDULE

Day one

09:00 – 13:00: Box truss set up and load in

13:00 – 14:00: Lunch

14:00 – 21:00: Light, sound, video and scenario set up

Day two

09:00 – 13:00: Scenario fine adjustments

13:00 – 14:00: Lunch

14:00 – 18:00: Light and sound focusing and recording

18:00 – 21:00: Technical rehearsal with subtitles

Day three Video check, rehearsal and performance (70 minutes)

09:00 – 13:00: General adjustments (sound, light video)

13:00 – 14:00: Lunch

14:00 – 17:00: Final rehearsal with subtitles

17:00 – 18:00: Stage clean up

18:00 – 19:00: Dinner

19:00 – 20:00: Preparation and warm up for the performance

20:30 – 22:00: Performance

Usually we need about 4 hours to strike and take out (truck near the stage)

A detailed schedule must be validated by the technical director of the company

Extras and Props

Provide by the venue

- One canary bird, must be a real bird. If a canary is not possible, we need a bird with yellow feathers and about the same size of a canary (see picture below).



- One 75 cl bottle of red wine per show. The bottle should have the same shape as the bottle of the wine Romanée-Conti.

- One 75cl bottle of blond beer per show

- 500 hellerman tape + 03 adhevisse tape (white, with 2,5cm) + 04 insulating tape

- **We need a person to wash and iron the costumes after each show.**

- we need showers in the dressing rooms and 20 bottles of mineral water per day

- we need tables and chairs to install the control room on stage

COSTUMES

	COSTUMES	DOUBLE	CLEAN	DRY	FREQUENSE
JULIA	REHEARSAL : BLEU TEE SHIRT, BLACK jogging	0	40°C	tumble dryer, delicates	1/ show
	1 pink silk dress	1	by hand	air dry	1/ show
	1 blue silk dress	0	by hand	air dry	1/ show
	underwear	3	40°C	tumble dryer, delicates	1/ show
RODRIGO	REHEARSAL: red tee shirt, white tee shirt (Gildan), blue jogging	0	40°	tumble dryer, delicates	1/ show

	1 black tee shirt, long sleeve	0	30°	tumble dryer, delicates	1/ show
	1 white tee shier (diamond draw)	1 (shooes draw)	30°	tumble dryer, delicates	1/ show
	1 grey tee shirt	1	30°	tumble dryer, delicates	1/ show
	1 white shirt	1	30°	tumble dryer, delicates	1/ show
	1 yellow red and green tee shirt	1	30°c	tumble dryer, delicates	1/ show
	1 black jean	1	30°c	tumble dryer, delicates	1/ show
	1 blue jean	1	30°c	tumble dryer, delicates	1/ show
	1 black trousers	1	30°c	tumble dryer, delicates	1/ show
	underwear		40°c	tumble dryer, delicates	1/ show
BED	blue pillowcase, fitted sheet and sheet	0	40°c	tumble dryer	look at.. Iron if necessary
DECOR	green dress, red skirt , purple dress, destroy grey tee shirt , black shirt, white dress, brown skirt, red dress, pink dress, blue tee shirt	0			

Do not hesitate to get in touch with us if you have questions
Thank you

www.christianejatahy.com

Contacts

Production coordination:

Henrique Mariano

+33 06 49 07 56 22

marianohenrique@gmail.com